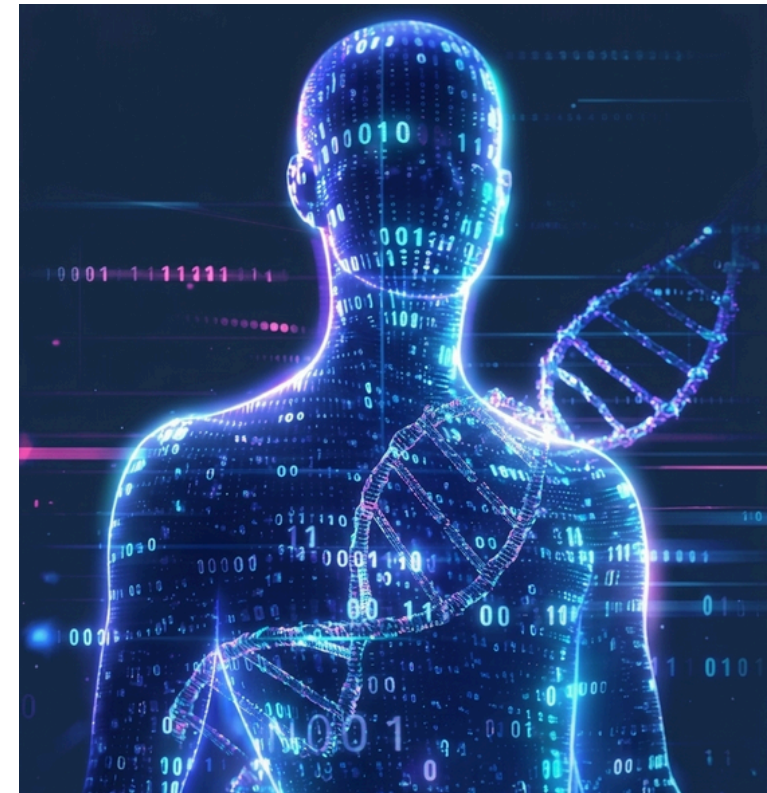


my HealthScore

Polygenic risk screening for
common diseases

View on mobile



About iGenetx

At iGenetx, we are pioneers in genetic testing and personalized health solutions. Founded with the vision of bringing genetic science closer to everyday health, we are Egypt's pioneers in DNA-driven wellness.

Using state-of-the-art technologies and the highest safety standards, iGenetx helps individuals, healthcare professionals, and institutions worldwide to understand and anticipate genetic risks, enabling more informed and proactive health decisions. With a focus on innovation and accessibility, iGenetx helps us better understand and care for health at every stage of life.

iGenetx

info@iGenetx.com | iGenetx.com



Which diseases are included in myHealthScore?

The software for the analysis is CE-marked and enables the risk evaluation of presenting different pathologies, providing the specialist with important information for your healthcare

Cardiovascular disease*



The test enables the reclassification of patients with intermediate risk by classical factors who, depending on their genes, could present high risk of coronary artery disease.

> 2 million variants

Type 2 diabetes



A nutritional or pharmacological approach in high-risk patients could avoid the development of the disease.

> 600.000 variants

Breast cancer



The test allows the detection of polygenic risk of breast cancer in women that is not detectable by other genetic tests. These cases are usually considered to be of sporadic origin.

> 550.000 variants

Prostate cancer



MyHealthScore is a valuable tool for the screening of this type of cancer, where Current strategies have limitations.

> 650.000 variants

MyHealthScore can be requested for cardiovascular disease, type 2 diabetes, or cancer risk, either separately or together, under better conditions.

*For a more comprehensive analysis of cardiovascular disease, the test includes the polygenic risk of: coronary artery disease, atrial fibrillation, lipid profile (triglycerides, LDL and HDL cholesterol) and hypertension.

Polygenic risk screening identifies a previously unknown genetic risk.

What is myHealthScore?

myHealthScore is the genetic screening test that provides information about the risk of presenting with common multifactorial diseases. The test determines the polygenic risk, which was previously unperceived, enabling the detection of a greater number of people at risk

What is a polygenic risk?

The most common diseases are often multifactorial in origin. In other words, they are caused by the effect of genetics together with other factors such as lifestyle and environment



In these cases, the genetic risk is not usually associated with a single variant but with thousands or millions of common variants throughout the genome. This is known as a polygenic risk. Knowing the genetic risk is useful to focus on other modifiable risk factors with the aim of prevention.



Knowing the genetic risk is useful to focus on other modifiable risk factors with the aim of prevention.

Why is it important?

Allows the quantification of the aggregated genetic risk, scattered along the genome, associated with a particular disease.

- The test is performed once in a lifetime, estimating the risk of disease and how it varies throughout life in comparison with the general population.
- It can be carried out before the onset of clinical risk factors, which allows for a more effective preventive approach.
- There are calculators that establish the risk of cardiovascular disease and cancer. Incorporating myHealthScore results in these calculators improve their predictive power. On its website, iGenetx offers risk calculators for cardiovascular disease and breast cancer.
- Information that is independent and complementary to traditional risk factors and the study of genetic panels.



1 in 4

people with coronary artery disease is undetected through the evaluation of clinical risk factors



7 in 10

women diagnosed with breast cancer do not have a family history of the disease



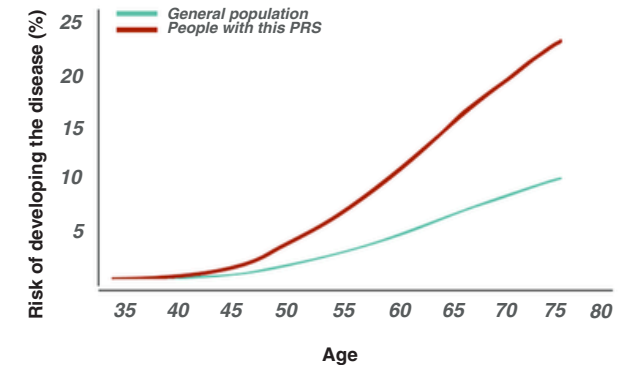
8 in 10

people with pre-diabetes are not aware of their condition and the possibilities for prevention

Whom is it intended for?

The test is suitable for proactive adults about their healthcare. The results provide information on the lifetime risk of presenting with the analysed diseases to inform preventive strategies and lifestyle changes that will help reduce the risk.

Additionally, a basic ancestry analysis is carried out in order to adjust the risk analysis based on this information.



How do I start?

