

What is included in the test?



Whole Exome Sequencing

versus the analysis targeted panels.

Analysis of 40 genes related to hereditary cancer.



The genes have been included based on criteria of expert groups, evidence of the gene-disease association and inclusion in guidelines for the clinical management of the patient.

Comprehensive report.



Report reviewed by the iGenetx expert medical team.

Counseling service for the specialist.



If needed, iGenetx provides expert genetic counseling to the physician for patient results interpretation.

About iGenetx

At iGenetx, we are pioneers in genetic testing and personalized health solutions. Founded with the vision of bringing genetic science closer to everyday health, we are Egypt's pioneers in DNA-driven wellness.

Using state-of-the-art technologies and the highest safety standards, iGenetx helps individuals, healthcare professionals, and institutions worldwide to understand and anticipate genetic risks, enabling more informed and proactive health decisions. With a focus on innovation and accessibility, iGenetx transforms the way we understand and care for health at every stage of life

iGenetx 

info@iGenetx.com | iGenetx.com



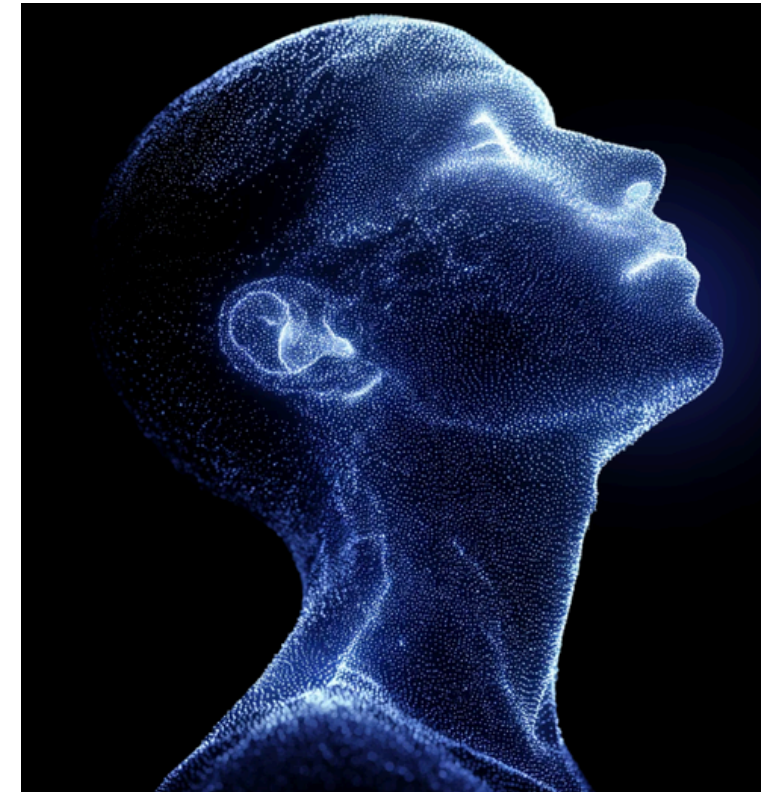
Hereditary
Cancer

iGenetx 

my CancerRisk

is a genetic test that establishes the risk of hereditary cancer

View on mobile



iGenetx   Veritas
Let's Get Checked

iGenetx.com

The test analyzes several types of cancers, detecting more patients at risk compared to panels targeting a single type of cancer.

Current situation



19 million new cases of cancer *in the world in 2020*¹.

It is estimated that between 5-10%(2) of cancer cases have a hereditary component, reaching 20% in certain types of cancer.



Knowing the risk of hereditary cancer allows for preventive measures and appropriate follow-up of the patient.



What is myCancerRisk?

mycancerRisk is a genetic test that analyzes 40 genes related to the most frequent hereditary cancer types, providing key information for the patient and their families.

In this way, preventive and follow-up Measures can be established to reduce the risk of early detection.

¹ IARC Global Cancer Observatory SEOM
² (Sociedad Española de Oncología Médica)

Who is it intended for?

The test is specially indicated for:

- Patients with cancer diagnosis.
- Individuals who have first degree relatives with cancer members with cancer before the age of 50.
- Individuals with a family history of cancer, suggesting a hereditary component.
- Individuals who want to know their hereditary cancer risk.

Why choose the myCancerRisk test?

Comprehensive

Analyze the risk of the most frequent hereditary cancers.

Professionalism

iGenetx has a team of expert curators who perform the interpretation based on the most up-to-date scientific knowledge.

Information

Provides key information to adapt patient management, which can also affect first-degree relatives.

Simple

A single saliva or blood sample.

The goal of predictive medicine is the early detection of individuals with a higher risk of hereditary cancer providing the necessary information to develop personalized medicine plans.

How to start?



The physician prescribes the test.



We provide a iGenetx kit to collect your saliva sample.



In iGenetx, we perform the sequencing and interpretation to generate the report.



The report is sent to your physician who will discuss the results with you.

Technical information

- Whole exome sequencing with 100x average coverage, sequencing more than 99% of the genes of interest at $\geq 20x$.
- Specialized software developed for a detailed variant classification.

	APC*	ATM*	AXIN2	BAP1	BARD1	BMPRIA	BRCA1*	BRCA2*	BRIP1	CDH1	CDK4	CDKN2A	CHEK2*	EPCAM*	FLCN	GREMT*	HOXB13	MITF	MLH1*	MLH3	MSH2*	MSH3	MSH6*	MUTYH	NBN	NF1	NTHL1	PALB2*	PMS2*	POLD1	POLE	POT1	PTCH1	PTEN*	RAD51C	RAD51D	SMAD4	STK11*	SUFU	TP53*
Breast		●			●		●	●	●	●			●						●		●			●	●	●								●	●		●		●	
Gynecological					●		●	●	●					●					●	●	●		●	●				●	●				●	●			●		●	
Prostate		●					●	●	●				●	●			●		●	●	●		●		●			●	●											●
Colorectal	●	●	●	●		●				●			●	●		●			●	●	●	●	●	●			●		●	●	●	●				●	●		●	
Gastric	●					●				●				●					●	●	●		●	●		●										●	●		●	
Pancreatic	●	●				●	●	●				●		●					●		●		●				●	●								●	●		●	
Skin				●				●			●	●		●	●				●	●	●		●	●				●				●	●				●	●		